

# SNAKE TYPE UNDER-WATER COLOR OR B/W CAMERA TO USE INSIDE WATER OR PIPE INSPECTION, 0.0 LUX NIGHT VISION BY USING 6-BRIGHT WHITE LEDS LAMP.

YCC-2000LWW-6S

YBC-2000LWW-6S

## SNAKE TYPE



## FEATURES

- 1/4" Color ccd chip set with 6-super bright white leds lamp.(YCC-2000LWW-6S)
- 1/3" B/W ccd with 6-super bright white leds lamp. (YBC-2000LWW-6S)
- 270k pixels, 380TVL
- More than 50m(150ft) deep inside water by water-proof metal case with water-proof jack.
- Included 10m(30ft) water-proof cable (optional : 30m/50m cable assy)
- Extremely low power consumption -DC12V / 0.15 AMP.
- 3.8mm or 4.3mm cone pinhole lens - optional

## SPECIFICATIONS

MODEL NO.	YCC-2000LWW-6S	YBC-2000LWW-6S
Image sensor	1/4" color ccd	1/3" B/W ccd
Resolution	270k pixels, 380TVL	270k pixels, 380TVL
Min. Illumination	0.0 lux by white leds lamp	0.0 lux by white leds lamp
Video out	Composite 1Vp-p	Composite 1Vp-p
Whit balance	Auto	Auto
Electronic shutter	1/60~1/100,000 sec.	1/60~1/100,000 sec.
Leds lamp	6-super bright white leds lamp	6-super bright white leds lamp
Lens	4.3mm or 3.8mm cone	4.3mm or 3.8mm cone
Cable & connector	Special water-proof connector with 10m cable a'ssy (optional : 30m/50m cable assy)	Special water-proof connector with 10m cable a'ssy (optional : 30m/50m cable assy)
Dimension	$\Phi 20 \times 72\text{mm}$ ( $\Phi 0.78'' - 2.83''$ )	$\Phi 20 \times 72\text{mm}$ ( $\Phi 0.78'' - 2.83''$ )
Weight	0.5kg	0.5kg

**100% UNDER-WATER COLOR CAMERA, MINIATURE DIMENSIONS  
(Ø30.0mm) 1/3" SONY SUPER-HAD COLOR CCD CAMERA WITH  
6-SUPER BRIGHT WHITE LEDS LAMP,  
WATER-PROOF METAL CASE WITH SPECIAL WATER-PROOF JACK.**

YCC-300LWW-6S



**GENERAL FEATURES**

- 1/3" Sony super-had color ccd camera with special water-proof jack
- 400TVL high resolutions & 0.01 lux super sensitivity
- More than 50m(150ft) deep inside water
- 0.00 lux min. illuminator by turns on of white leds lamp
- 0.01 lux min. illumination by turns off of leds lamp.
- Metal case with anodized coating or acetal case to use chemical pool (optional)
- Standard board lens (6.0, 12.0, 16.0)
- Strong pylex glass window with epoxy bond
- DC12V / 0.15 AMP. (1.8 watts) – very small power consumptions

**SPECIFICATIONS**

MODEL NO.	YCC-300LWW-6S
Image pick up device	1/3" sony super-had color ccd
TV system	NTSC or PAL (option)
Scanning system	2 : 1 Interlace
Sync. System	Internal sync
Resolutions	420TVL (H)
Usable illumination	0.0 lux by 6-super bright white leds lamp, 0.01 lux turns off of white leds lamp
S/N ratio	More than 48dB (agc off)
Gamma	0.45
Video output	1Vp-p 75 ohms
Electronic shutter time	NTSC=1/60~1/100,000/sec PAL=1/50~1/100,000/sec
Power consumption	DC12V±1V 200mA
Built-in lens	6.0mm board lens or 8.0mm board lens(optional)
Connector	Special water-proof jack
Dimensions	Ø30.0-80.0mm(Ø 1.18"-3.14") at standard board lens
Material	Al-metal with anodized coating or acetal case (optional)
Weight	Net weight – 300grs

# 100% UNDER WATER COLOR CAMERA WITH 6-SUPER BRIGHT WHITE LEDS LAMP, MOUNTED TO 5M-GLASS FIBER ROD TO USE SEA OR CHEMICAL POOL.

YCC-350LWW-6GLS

YCC-300LWW-6GLS



## FEATURES

- Camera mounted to 5m-glass fiber rod {folded length : 1.2m (4.0ft)}
- 10m-urethane spring cable inside glass fiber rod to easy extension.
- 100% under-water by using water-proof jack & urethane spring cable.
- Extremely low power consumption - DC12V / 150mA.
- 6- super bright white leds lamp on the front of camera.
- Metal case to use inside water or acetal case to use chemical pool (optional)
- Selectable focus range : 6.0mm, 8.0mm, 12mm
- Potable carrying case - included
- 6-white leds lamp on-off available
- Family with al-suit case 5.6" color LCD monitor box (YST-560, optional)

## SPECIFICATIONS

MODEL NO.	YCC-350LWW-6GLS	YCC-300LWW-6GLS
Image pick up device	1/3" sony super-had color ccd	Same
TV system	NTSC or PAL (option)	Same
Scanning system	2 : 1 interlace	Same
Sync. System	Internal sync	Same
Resolutions	More than 420 TVL	Same
Usable illumination	0.0Lux by 6-super bright white Leds lamp	Same
	0.01 Lux turns off of white Leds lamp	Same
S/N ratio	More than 48dB (agc off)	Same
Gamma	0.45	Same
Video output	1Vp-p 75 ohms, negative polarity	Same
Electronic shutter time	NTSC=1/60~1/100,000/sec	Same
Power consumption	DC12V±1V / 150mA (1.8watts)	Same
Builtin lens	3.6mm board lens	6.0mm board lens
Dimensions	φ34-60mm(φ1.33"-2.36") Glass rod : φ40×5m(folded : 1.2m)	φ30-80mm(φ1.18"-3.14") Glass rod : φ40×5m(folded : 1.2m)
Case material	Al-metal with anodized coating	Same
Weight	2.5 kgs	2.5 kgs

**100% UNDER-WATER COLOR CAMERA, STANDARD DIMENSIONS  
(Ø34.0mm) 1/3" SONY SUPER-HAD COLOR CCD CAMERA WITH  
6-SUPER BRIGHT WHITE LEDS LAMP, WATER-PROOF METAL OR  
ACETAL CASE WITH WATER-PROOF SPECIAL JACK.**

YCC-350LWW-6S



**GENERAL FEATURES**

- 1/3" Sony super-had color ccd camera with special water-proof jack
- 420 TVL high resolutions & 0.01 lux super sensitivity
- More than 50m(150ft) deep inside water
- 0.00 lux min. Illumination by turns on of 6-white leds lamp
- 0.01 lux min. Illumination by turns off of white leds lamp.
- Metal case with anodized coating or acetal case to use chemical pool (optional)
- Standard board lens - 3.6mm lens or 6.0mm lens (optional)
- DC12V / 0.15AMP. (1.8watts)-very small power consumptions
- Strong pyrex glass window with epoxy bonding

**SPECIFICATIONS**

MODEL NO.	YCC-350LWW-6S
Image pick up device	1/3" sony super-had color ccd
TV system	NTSC or PAL (option)
Scanning system	2 : 1 interlace
Sync. System	Internal sync
Resolutions	More than 420 TVL
Usable illumination	0.0 lux by 6-super bright white leds lamp 0.01 lux turns off of white leds lamp.
S/N ratio	More than 48dB (agc off)
Gamma	0.45
Video output	1Vp-p 75 ohms, negative polarity
Electronic shutter time	NTSC=1/60~1/100,000/sec PAL=1/50~1/100,000/sec
Power consumption	DC12V±1V / 150mA (1.8watts)
Builtin lens	fo: 3.6mm board lens or 6.0mm board lens
Dimensions	Ø34.0-60.0mm(Ø1.33"-2.36") at standard board lens
Case material	Al-metal case with anodized coating or acetal case (optional)
Weight	Net weight - 300grs

**100% UNDER-WATER B/W CAMERA WITH 6-WHITE LEDS LAMP TO USE TOTAL DARKNESS AREA, BUILTIN WATER-PROOF JACK AND PYREX GLASS WINDOW WITH EPOXY BOND MORE THAN 50M(150ft) INSIDE WATER OR ACETAL CASE TO USE CHEMICAL POOL.**

YBC-350LWW-6S



### GENERAL FEATURES

- 100% Under-water B/W camera with 6-white led lamp to use total darkness area
- More than 50m(150ft) inside water by water-proof metal case or acetal case to use chemical pool (optional)
- Builtin pyrex glass window on epoxy bond & water-proof jack.
- Builtin electronic auto iris & automatic back light compensation
- 1/3" B/W ccd camera - 270k pixels, 380TV lines
- 10m(30ft) water-proof cable with DC / RCA / RCA jack (optional : 30m, 50m)

### SPECIFICATIONS

MODEL NO.	YBC-350LWW-6S
Image pick up device	1/3" B/W ccd image sensor
TV system	EIA, CCIR
No. Of pixel	270K pixels
Scanning system	EIA=525 LINES, 60 FIELD/sec
Sync. System	Internal sync
Resolutions	380TVL (H)
Usable illumination	0.1 lux (led off), 0.0 lux (led on)
S/N ratio	More than 45dB (age off)
Gamma	0.45
Video output	1Vp-p 75 ohms, negative polarity
Electronic shutter time	EIA=1/60~1/100,000/sec CCIR=1/50~1/100,000/sec
Power consumption	DC12V±1V / 150mA
Builtin lens	fo : 3.6mm board lens f : 1.8
Dimensions	φ35.0-48.0mm
Body / cable	Aluminum / 10m(30ft) water-proof cable
Weight	Net weight - 200g

# 100% UNDER WATER COLOR CAMERA WITH 45-STRONG BRIGHT WHITE LEDS LAMP TO TAKE LONG DISTANCE IMAGE PICK-UP TO USE INSIDE SEA OR CHEMICAL POOL.

YCC-650LWW-45S



## GENERAL FEATURES

- 270K pixels, 400TV lines & 45-strong super bright white leds lamp.
- 100% Under-water connector & pyrex glass window by epoxy bond
- 100% Water-proof acetal case & water-proof cable
- Extremely low power consumption - DC12v / 300ma.
- 45-Strong super bright white leds lamp to use total darkness area.
- Strong chemical material(acetal) to use chemical pool & sea.
- Selectable focus range : 3.6mm, 4.3mm, 6.0mm - optional
- Builtin 45-super bright white leds lamp
- Optional water-proof cable : 10m(30ft), 30m(90ft), 50m(150ft)

## SPECIFICATIONS

MODEL NO.	YCC-650LWW-45S
Image sensor	1/3" sony super-had color ccd
Scanning system	2 : 1 interace, sync
Sync system	Internal sync
Resolution	400 TV lines(H)
S/N ratio	More than 48dB
Gamma characteristics	0.45
Min. Illumination	0.1 lux leds off, 0.00 lux leds on
Video out	Composite video, 1Vp-p
Whit balance	Auto white balance
Electronic shutter	1/60~1/100,000 sec.
Power supply	DC 12V±10% (+10V~+15V)
Lens	6.0mm (OPTIONAL : 3.6, 8.0, 12.0)
Ambient operating temp	-5°C ~ +40°C
Storage operating temp	-10°C~ +50°C
Dimension	CAMERA : $\phi 65 \times 57.5\text{mm}$ / $\phi 2.56" \times 2.26"$
Weight	800g

# 100% UNDER WATER COLOR CAMERA WITH 45-STRONG SUPER BRIGHT WHITE LEDS LAMP, MOUNTED TO 5M-GLASS FIBER ROD TO USE SEA OR CHEMICAL POOL.

POTABLE CARRYING CASE (INCLUDED)

YCC-650LWW-45GLS



## GENERAL FEATURES

- Camera mounted to 5m glass fiber rod {folded length : 1.2m (4.0ft)}
- 10m-urethane spring cable inside glass fiber rod to easy extension.
- 100% Under-water by using water-proof case (acetal) & urethane spring cable.
- Extremely low power consumption - DC12V/300mA.
- 45-Strong super bright white leds lamp to use total darkness area.
- Metal case to use inside water or acetal case to use chemical pool (optional)
- Selectable focus range : 3.6mm, 4.3mm, 6.0mm - optional
- Potable carrying case - included
- 45-White leds lamp on-off available
- Family with al-suit case 5.6" color LCD monitor box (YST-560, optional)

## SPECIFICATIONS

MODEL NO.	YCC-650LWW-45GLS
Image sensor	1/3" sony super-had color ccd
Scanning system	2.1 interace, sync
Sync system	Internal sync
Resolution	400 TV lines(H)
S/N ratio	More than 48dB
Gamma characteristics	0.45
Min. Illumination	0.00 lux by 45 super bright white leds lamp.
Video out	Composite video, 1Vp-p
Whit balance	Auto white balance
Electronic shutter	1/60~1/100,000 sec.
Power supply	DC 12V±10% (+10V~+15V)
Lens	3.6mm board lens (option : 6.0)
Ambient operating temp	-5°C ~ +40°C
Ambient operating temp	-10°C ~ +50°C
Dimension	Camera : $\Phi 65 \times 57.5$ mm Glass rod : $\Phi 40 \times 5$ M (folded : 1.2m)
Weight	2.5kg

# 100% UNDER WATER B/W CAMERA WITH 40-INFRARED (950NM) LEDS LAMP TO TAKE LONG DISTANCE IMAGE PICK-UP TO USE INSIDE SEA OR CHEMICAL POOL.

YBC-650LWW-40S



SPECIAL CCTV CAMERAS & SYSTEM

## FEATURES

- 1/3" Sony super-had B/W ccd with 40-IR illuminator (0.01 lux without light).
- 100% Water-proof jack & pyrex glass window by epoxy bond
- 100% Under-water by using water-proof case & cable more than 50m(150ft) inside water
- Extremely low power consumption - DC12V/200mA.
- Infrared (950nm) leds lamp to use 0.00 lux by using 40-IR illuminator (invisible light)
- Strong chemical materiel(acetal) to use chemical pool & sea.
- Selectable focus range : 3.6mm, 4.3mm, 6.0mm - optional
- Optional water-proof cable : 10m(30ft), 30m(90ft), 50m(150ft).

## SPECIFICATIONS

MODEL NO.	YBC-650LWW-40S
Image sensor	Sony super-had B/W ccd, 1/3" format
Scanning system	2:1 interace, sync
Sync system	Internal sync
Resolution	400 TV lines(H)
S/N ratio	More than 46dB
Gamma characteristics	0.45
Min. Illumination	0.01 lux without lamp / 0.000 lux with lamp.
Video out	Composite video, 1Vp-p
Electronic shutter	1/60 ~ 1/100,000 sec.
Power supply	DC 12V±10%
Lens	3.6mm board lens (optional : 6.0, 8.0, 12.0mm lens)
Ambient operating temp	-5°C~+40°C
Ambient operating temp	-10°C~+50°C
Dimension	Camera : φ65×57.5mm
Weight	800g



# MINIATURE 100% UNDER-WATER 16x OPTICAL ZOOM WITH 32x, 64x, 128x DIGITAL ZOOM COLOR CAMERA, 50M(150Ft) INSIDE WATER OR CHEMICAL POOL.

YCC-5000WW-27S



## FEATURES

- 100% Under-water by using water-proof case and receptacle.
- $\phi$  70-128(mm) /  $\phi$  2.75"-5.03" miniature metal case with special water-proof jack to use more than 50m inside water.
- 1/4" Sony super-had color ccd, 410K pixels, 480 TV lines.
- 16 $\times$  Optical zoom with 32 $\times$ , 64 $\times$ , 128 $\times$  digital zoom control.
- All functions on screen display & adjustable by using wired remocon.
- More than 50m(150ft) inside water operation by water-proof cable a'ssy
- Builtin 27-super bright white leds lamp to use total darkness area
- Pan/tilt & auto pan control at digital zoom-in range by remocon (17x~128x)
- Auto focus, auto iris, auto white balance, auto back light compensation.
- 3-preset control by end user.
- 100% Water-proof metal case or acetal case to use chemical pool (optional)

## SPECIFICATIONS

MODEL NO.	YCC-5000WW-27S(HM)	YCC-5000WW-27S(HP)
Signal system	NTSC color	PAL color
Total / effective	410K/380K pixels	470K/440K pixels
Pick-up device	1/4" color ccd	
Lens	x16 zoom video auto focus (F1.6 f=3.9mm-63mm)	
Horizontal resolution	Over 480 TV lines	Over 480 TV lines
Digital zoom	2x, 4x, 8x	
Minimum illumination	0.00 lux by 27 super bright white leds lamp	
Focus range	Focus 10mm ~ $\infty$	
Exposure	Auto(ccd iris)/manual	
White balance	Auto /preset (indoor, outdoor) / manual / one push auto / special auto	
Electronic shutter	1/60~1/10,000 sec.(28 step)	1/50~1/10,000 sec.(28 step)
Control interface	RS-232C (option : RS 422, RS-232C TTL)	
Video output	1Vp-p composite video(75 $\Omega$ )	
Sync. System	Interlock	
Luminance s/n rate	More than 48 dB	
Supply voltage	12V $\pm$ 2V	
Operating temperature	0 $^{\circ}$ C~40 $^{\circ}$ C (humidity : 10% RH~80% RH)	
Dimension (W $\times$ H $\times$ D)	$\phi$ 70 $\times$ 128mm/ $\phi$ 2.75"-5.03"	
Weight	400 grs	

# 100% UNDER-WATER MINIATURE 16x OPTICAL ZOOM WITH 32x, 64x, 128x DIGITAL ZOOM COLOR CAMERA, MOUNTED TO 5M-GLASS FIBER ROD TO USE SEA OR CHEMICAL POOL.



## FEATURES

- Camera mounted to 5m-glass fiber rod {folded length : 1.2m(4ft)}
- 10m-Urethane spring cable inside glass fiber rod to easy extension.
- 100% Under-water by using water-proof case.
- 1/4" Sony super-had color ccd, 410k pixels, 480 TV lines.
- 16x Optical zoom with 32x, 64x, 128x digital zoom control.
- All functions on screen display & adjustable by using wired remocon(included).
- Built-in 27 super bright white leds lamp to take good image at total darkness area
- Pan/tilt & auto pan control at digital zoom-in range by remocon (17x~128x)
- auto focus, auto iris, auto white balance, auto back light compensation.
- 3-Preset control by end user.
- Metal case to use inside water or acetal case to use chemical pool (optional)
- Potable carrying case - included
- 27-White leds lamp on-off available
- Family with al-suit case 5.6" LCD monitor box (YST-560, optional)

## SPECIFICATIONS

MODEL NO.	YCC-5000WW-27S(HM)		YCC-5000WW-27S(HP)	
Signal system	NTSC color		PAL Color	
Total / effective	410k / 380k pixels	270k / 250k pixels	470k / 440k pixels	320k / 290k pixels
Pick-up device	1/4" color ccd			
Lens	x16 zoom video auto focus (F1.6 f=2.9mm-63mm)			
Horizontal resolution	Over 480 TV lines		Over 480 TV lines	
Digital zoom	2x, 4x, 8x			
Minimum illumination	0.00 lux by 27 leds lamp			
Focus range	Focus 10mm ~ ∞			
Exposure	Auto(ccd iris) / manual			
White balance	Auto / preset (indoor, outdoor) / manual / one push auto / special auto			
Electronic shutter	1/60~1/10,000 sec. (28 step)		1/50~1/10,000 sec. (28 step)	
Control interface	RS-232C (option : RS 422, RS-232C TTL)			
Video output	1Vp-p composite video(75Ω) separated Y,C output			
Sync. System	Inter-lock or Gen-lock(VBS)			
Luminance s/n rate	More than 48 dB			
Supply voltage	12V±2V			
Power consumption	Less than 4W			
Operating temperature	0°C~40°C (humidity : 10% RH~80% RH)			
Dimension (W×H×D)	Camera : φ90×130mm Glass rod : φ40×5m (folded : 1.2m)			
Weight	4 kg			

# 100% UNDER-WATER MOTORIZED ZOOM COLOR CAMERA, MORE THAN 50M(150ft) INSIDE WATER OR CHEMICAL POOL.



YCC-7000WW-48S : NORMAL

YCC-7000WW-48S-DN : DAY-NIGHT

- ▶ *x27 OPTICAL ZOOM DAY-TRUE COLOR / NIGHT-0.01 LUX B/W NIGHT VISION BY MOTORIZED CHANGING FILTER (YCC-7000WW-48S-DN)*

## FEATURES

- 100% Under-water by using water-proof metal case and receptacle.
- 1/4" Super-had color ccd, 410k pixels, 480 TV lines, sony chip.
- x22 Optical zoom with 44x, 88x, 176x digital zoom control.
- All functions on screen display & adjustable by using wired remocon(included).
- Strong window by 5.0mm pyrex glass to use more than 50m(150ft) inside water.
- Builtin 48-super bright white leds lamp to take good image in total darkness area.
- Pan/tilt & auto pan control at digital zoom-in range by remocon. (23x~216x)
- Auto focus, auto iris, auto white balance, auto back light compensation.
- 3-Preset control by remocon (included)
- Optional water-proof cable : 10m(30ft), 30m(90ft), 50m(150ft).
- Very low power consumptions : DC12V / 500mA(6watts)

## SPECIFICATIONS

MODEL NO.	YCC-7000WW-48S	YCC-7000PWW-48S
Signal system	NTSC color	PAL color
Total / effective	410K / 380K pixels	470K / 440K pixels
Pick-up device	1/4" color ccd	
Lens	x22 optical zoom and video auto focus (F1.6 f=2.9mm-63mm)	
Horizontal resolution	Over 480 TV lines	Over 480 TV lines
Digital zoom	2x, 4x, 8x	
Minimum illumination	1 lux at turn off, 0.00 lux at turn on	
Focus range	Focus 10mm ~ ∞	
Exposure	Auto(ccd iris)/manual	
White balance	Auto / preset (indoor, outdoor) / manual / one push auto / special auto	
Electronic shutter	1/60~1/10,000 sec. (28 step)	1/50~1/10,000 sec. (28 step)
Control interface	RS-232C (option : RS 422, RS-232C TTL)	
Video output	1Vp-p composite video(75Ω) separated Y,C output	
Sync. System	Inter-lock or GEN-lock(VBS)	
Luminance s/n rate	More than 48 dB	
Supply voltage	12V±2V	
Power consumption	Less than 6W	
Operating temperature	0°C~40°C (Humidity : 10% RH~80% RH)	
Dimension	Φ82×122m / Φ3.14"×4.80"	
Weight	5.5 kg	

# 100% UNDER-WATER 22x OPTICAL ZOOM WITH 44x, 88x, 176x DIGITAL ZOOM COLOR CAMERA, MOUNTED TO 5M-GLASS FIBER ROD TO USE SEA OR CHEMICAL POOL.



"POTOABLE CARRING CASE"

YCC-7000WW-48GLS : NORMAL

YCC-7000WW-48GLS-DN : DAY-NIGHT

▶ x27 OPTICAL ZOOM DAY-TRUE  
COLOR/NIGHT-0.01 LUX B/W  
NIGHT VISION BY MOTORIZED CHANGING  
FILTER(YCC-7000WW-48S-DN)

## FEATURES

- Camera mounted to 5m-glass fiber rod - folded length : 1.2m(4ft)
- 10m-urethane spring cable inside glass fiber rod to easy extension.
- 100% Under-water by using water-proof metal case & pyrex glass window.
- 1/4" Sony super-had color ccd, 410k pixels, 480 TV lines
- ×22 Optical zoom with 44×, 88×, 176× digital zoom control.
- All functions on screen display & adjustable by using wired remocon(included).
- Built-in 48-super bright white leds lamp to take good image in total darkness area.
- Pan/tilt & auto pan control at digital zoom-in range by remocon.
- Auto focus, auto iris, auto white balance, auto back light compensation.
- Metal case to use inside water or acetal case to use chemical pool (optional)
- 3-Preset control by end user.
- Potable carrying case - included
- 48-White leds lamp on-off available
- Family with al-suit case 5.6" color LCD monitor box (YST-560, optional)

## SPECIFICATIONS

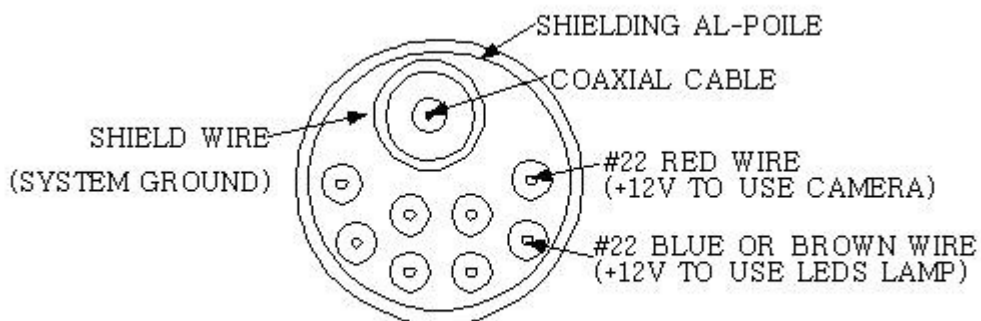
MODEL NO.	YCC-7000WW-48GLS	YCC-7000PWW-48GLS
Signal system	NTSC COLOR	PAL color
Total / effective	410k / 380k pixels	470k / 440k pixels
Pick-up device	1/4" color ccd	
Lens	x22 optical zoom and video auto focus (F1.6 f=2.9mm-63mm)	
Horizontal resolution	Over 480 TV lines	Over 480 TV lines
Digital zoom	2x, 4x, 8x	
Minimum illumination	0.00 lux by 48 white leds lamp	
Focus range	Focus 10mm ~ ∞	
Exposure	Auto(ccd iris) / manual	
White balance	Auto / preset (indoor, outdoor) / manual / one push auto / special auto	
Electronic shutter	1/60~1/10,000 sec.(28 step)	1/50~1/10,000 sec.(28 step)
Control interface	RS-232C (option: RS 422, RS-232C TTL)	
Video output	1Vp-p composite video(75Ω) separated Y,C output	
Sync. System	Inter-lock or gen-lock(VBS)	
Luminance s/n rate	More than 48 dB	
Supply voltage	12V±2V	
Power consumption	Less than 4W	
Operating temperature	0°C~40°C (humidity : 10% RH~80% RH)	
Dimension	Camera : φ82×123mm Glass rod : φ40×5M (folded : 1.2m)	
Weight	3.5 Kg	

# 100% UNDER-WATER CABLE WITH SPECIAL WATER-PROOF RECEPTACLE.



## FEATURES

- Built-in coaxial cable to use video signal more than 100m(300ft) long distance observation.
- Built-in special water-proof receptacle to use more than 50m(150ft) inside water or sea.
- Built-in 2-DC jack to use the one is +12V power supply of camera module and the other one is +12V power supply of white LEDs lamp.
- All wires contained & insulated by poly vinyl jacket
- Shielding al-foil to stop RF interference around outside wires & coaxial cable.
- Detail of under-water cable



THE OTHER WIRES WILL USE ANOTHER MODELS

# REEL TYPE WATER-PROOF CABLE A'SSY.



YRL-10 (10 METERS)

YRL-30 (30 METERS)

YRL-50 (50 METERS)

## FEATURES

- Choice of 10m(30ft), 30m(90ft), 50m(150ft) cable length.
- Builtin RCA jack to connect video output.
- Builtin 2-DC jack to connect +12V DC to use camera & leds lamp separately.

## SPECIFICATIONS

MODEL NO.	YRL-10	YRL-30	YRL-50
Cable length	10m (30ft)	30m (90ft)	50m (150ft)
Dimensions	$\phi$ 28.0-120(w)mm $\phi$ 11.02"-4.72"(w)	$\phi$ 350-200(w)mm $\phi$ 13.7"-7.8"(w)	$\phi$ 420-250(w)mm $\phi$ 16.5"-9.8"(w)
Weight	3.5 kgs	8.0 kgs	13 kgs

# STRONG ALUMINUM SUIT CASE WITH 5.6" COLOR TFT LCD MONITOR TO USE UNDER-WATER CAMERA.



YST-350LWW-5.6"

YST-350LWW-7.0"

## FAMILY ITEMS (OPTIONAL)

- ▶ YCC-300LWW-6S, MINIATURE COLOR UNDER-WATER CAMERA, MORE THAN 30M(90ft) INSIDE WATER
- ▶ YCC-350LWW-6S, STANDARD COLOR UNDER-WATER CAMERA, MORE THAN 30M(90ft) INSIDE WATER
- ▶ YBC-350LWW-6S, MINIATURE B/W UNDER-WATER CAMERA, MORE THAN 30M(90ft) INSIDE WATER
- ▶ YCC-5000WW-27S : x16 MOTORIZED ZOOM COLOR UNDER-WATER CAMERA, MORE THAN 50M(150ft) INSIDE WATER
- ▶ YCC-7000WW-48S : x22 MOTORIZED ZOOM COLOR UNDER-WATER CAMERA, MORE THAN 30M(90ft) INSIDE WATER
- ▶ YCC-7000WW-48S-DN : x27 ZOOM DAY-NIGHT COLOR UNDER-WATER CAMERA, MORE THAN 30M(90ft) INSIDE WATER

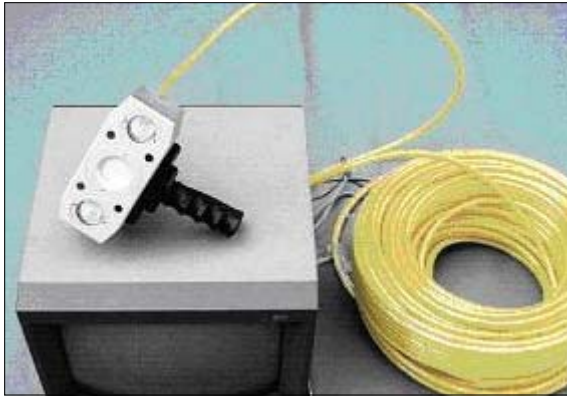
## FEATURES

- 5.6" Color TFT LCD monitor (optional : 7.0" color TFT LCD monitor)
- Strong aluminum suit case to use easy portable transportation
- Built-in rechargeable battery & charge circuits (charger included)
- Rotary type charge - camera on - camera / lamp on - lamp on control knob.
- Normal - mirror image change switch.
- Charge / external power input jack.
- 2 HR operation after 4HR charged

## SPECIFICATIONS

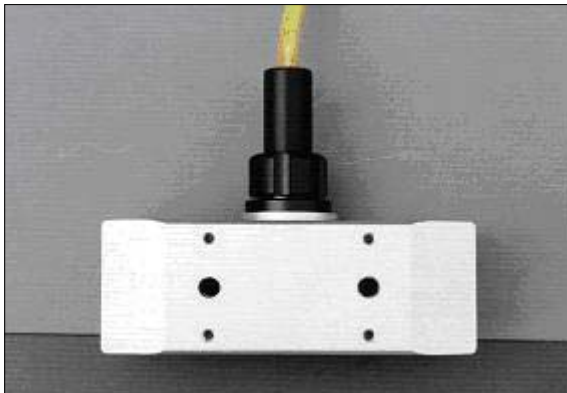
TV SYSTEM	NTSC OR PAL (OPTIONAL)
Power supply source	DC 12V by internal battery or AC/DC adaptor (included)
Power consumption	7.0 watt
Operating temperature	-15°C to +60°C (+5°F TO +140°F)
LCD screen	5.6" TFT LCD color (4" or 7" available)
Dimension of monitor	159(w) × 125(h) × 34(d)mm / 6.25" × 4.92" × 1.33"
Weight of monitor only	0.4kgs (excluded monitor bracket)
Weight of unit	4.0 kgs
Dimensions of unit	470(W) × 370(H) × 100(D)mm / 18.5" × 14.5" × 3.9"

# DIVER'S UNDER-WATER COLOR CAMERA SYSTEM, MORE THAN 100M (300ft) INSIDE SEA OR WATER.



CCTV CAMERA SYSTEM  
(MONITOR OPTION)

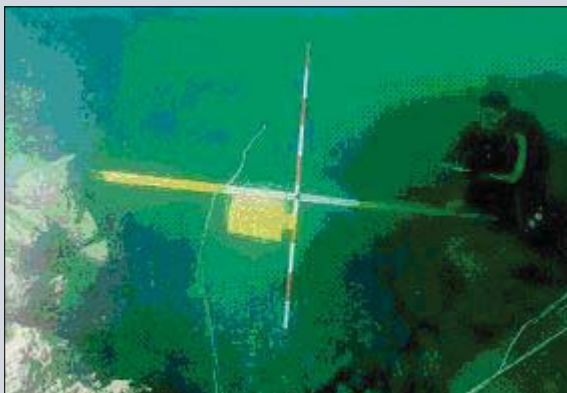
- YDC-1000-2HL** : CAMERA WITH 2-HALOGEN LAMP
- YCM-1000** : 10" COLOR MONITOR(OPTIONAL)
- YMV-240** : 24HR REAL TIME RECORDING & PLAY BACK BY DC 12V CAR OR BOAT. (OPTIONAL)
- YMV-960** : 30HR REAL TIME RECORDING PLUS 960HR TLR BY DC 12V CAR OR BOAT (OPTIONAL)



TOP VIEW OF THE CAMERA



HAND HELD



UNDER WATER VISION

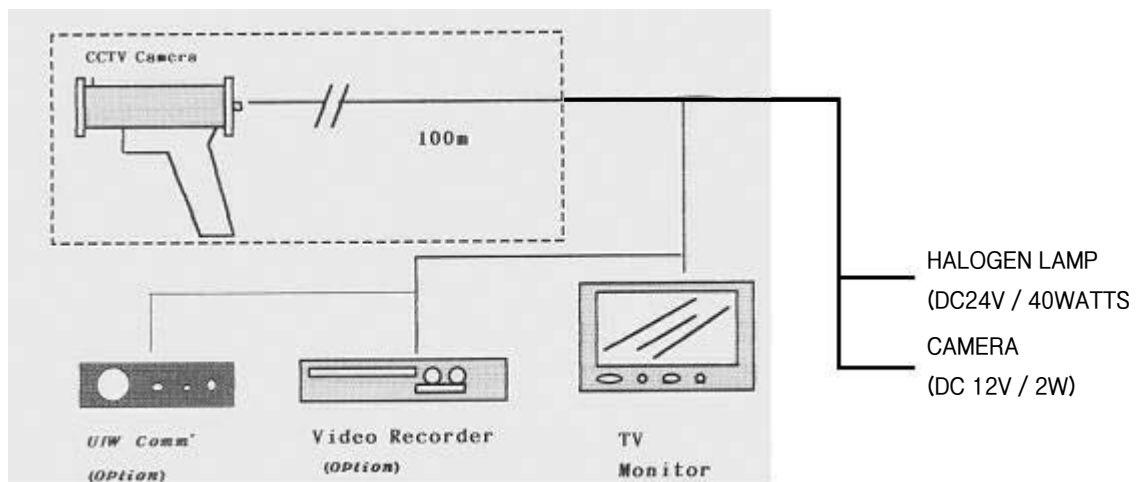


SEA SIDE VIEW



# DIVER'S UNDER-WATER COLOR CAMERA.

## High Resolution Color Underwater CCTV Camera System



### FEATURES

- High resolution 1/3" sony super-had color ccd.
- Auto BLC function
- 480TV lines at center
- Min illumination 1 lux (f=1.4)

### MATERIAL LIST

- 1) Surface case : duralumin with special coating
- 2) Window glass : poly carbonate.
- 3) Handle : special abs plastic
- 4) Cable : urethane jacket water-proof cable

## SPECIFICATIONS

MODEL NO.	YDC-1000-2HR
Signal system	NTSC or PAL
Image sensor	Interline 1/3" super-had sony ccd
Total pixels	811(H) × 508(V) about 410k pixels
Angle of view at diagonal	130° WIDE ANGLE BY 2.97mm LENS
White balance	Auto
Horizontal resolution	More than 480TV lines
Sensitivity	0.1 lux / f2.0 (agc on)
Electronic shutter	1/60~1 / 100,000 for AE operation
Power consumption	Less than 150mA
Camera supplied voltage	DC12V (9V to 15V)
Size	180mm(L) × 80mm(H) × 70mm(D)
Depth	100 meters
Under water light	20watts × 2 DC24V halogen lamp
Under water urethane cable	100m video, power supply

## USE

- Inspection for the underwater structures
- Inspection for the marine growth

## COMPOSITIONS

- Under-water color CCTV camera & two lightings 1
- 100m (3000ft) urethane jacket cable assy 1
- 10" TV color monitor-DC12V operation 1 (optional)
- 2 or 4 head VHS recorder-DC12V operation 1 (optional)
- Voice communication box 1 (optional)

# FIRE WIRE PROGRESSIVE SUPER HIGH RESOLUTION COLOR CAMERA, DIRECT CONNECTION TO PC BY IEEE1394 TO USE MOVING OR STILL IMAGE MEMORY & INTERNET IMAGE CONFERENCE.

XGA-1000+IEEE1394 DRIVER UNIT



## FEATURES

- 1) Super high resolution more than 650TVL plus x12 optical zoom.
- 2) 1077(H) × 788(V) pixels progressive scan 1/3 sony ccd chip.
- 3) Max. x25 magnification by +5.00 macro lens & 15-white leds lamp.(optional)
- 4) R.G.B frame rate : 15 frame/sec.
- 5) Direct connection to pc by ieee1394 to use moving or still image file save by bmp, AVI, JPEC, mpeg4. & long distance image conference by internet.
- 6) AD key remocon to easy control of large/small/negative-positive/color on-off/ capture/push to auto focus/stand-by on-off buttons.(optional)
- 7) VGA output to use VGA monitor (R.G.B, H-sync, V-sync)
- 8) RS-232C port to use all function remote control by computer
- 9) IR remocon sensor - to use IR remocon (optional)
- 10) Application area
  - Medical image conference of moving or still image by computer to computer to use long distance image conference by internet.
  - Video microscope to use laboratory
  - Video projection system to use education or laboratory.
  - Automatic image detecting system.
  - Finger wave or pass-port inspection by compare image from long distance information center by internet.

## SPECIFICATION SHEETS

- See attached 5-pages specification sheets.(Request to factory)

## DIMENSIONS & WEIGHT

- 1) XGA-1000 (camera unit) : 63(W) × 63(H) × 14(D)mm 0.5kg  
(2.48" × 2.48" × 5.78")
- 2) IEEE 1394 (IEEE 1394 driver unit) : 218(w) × 44(H) × 152(D)mm  
(8.58" × 1.73" × 5.98")