



Société Française d'Emetteurs

## CCTV & MONITORING VIDEO

**SERVEUR VIDEO et audio - MDVR**

**MODEM GPRS/EDGE/3G ROUTEUR**



**S3201**  
serveur 1 voie vidéo  
stockage carte SD  
Modem 3G

**S3225**  
Serveur 4 voies vidéo  
stockage:

HDD:2.5" 500 Go

ou

SSD 64 Go

Modem 3G

WIFI

GPS



✍ Le serveur vidéo **S3201** est équipé d'un encodeur vidéo **H264** une voie, d'un slot de **stockage sur carte SD** jusqu'à **32Go** et d'un **modem routeur 3G**.

✍ La version **S3225** dispose de 4 voies vidéo, d'un **HDD2,5"-500 Go** ou **SSD64Go** et d'un **modem routeur 3G**.

✍ Ils permettent la connexion à **Internet** en utilisant le **GPRS/EDGE** ou la **3G** ou en se connectant à un réseau privé filaire ou sans fil (option).

✍ Ils peuvent se connecter de n'importe où et à tout moment, dans les zones couvertes par le réseau **GSM**.

✍ **Produit industriel** destiné à la surveillance d'un site éloigné non équipé en réseau, rapide de mise en service lors d'installation temporaire ou mobile.

✍ Alimenté en **12V DC**, il est tout particulièrement adapté à être installé dans un véhicule.

✍ Nécessite un abonnement **M2M + carte SIM**

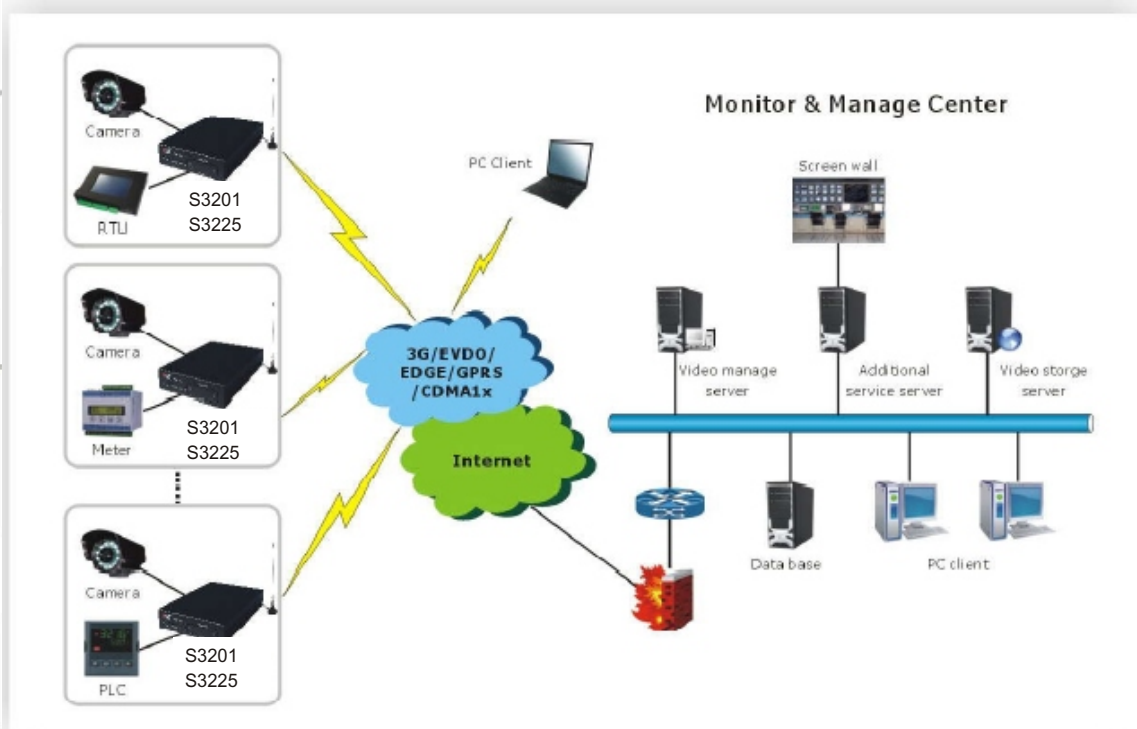
### PRINCIPE & TOPOLOGIE



Taxi



Bus



# S3201



## Caractéristiques:

### Basis feature

- ◇ H.264 standard, high compression ratio and flexible.
- ◇ TCP/IP support, support transport video, audio, alarm info, voice serial data by TCP/IP protocol.
- ◇ PPPoE, DHCP, ICMP support.
- ◇ Preview on WEB page, support play real-time video by IE browser.
- ◇ PTZ support and electric lens control, multiple decode support. Support setting preset positions, cruise, tracking.
- ◇ Support RS-232 port data transportation.
- ◇ Two-way voice communication support.
- ◇ Alarm input/output, motion detect, etc.
- ◇ Timing photo and sending.
- ◇ Full 3G router function, DMZ, NAT.
- ◇ Support subtitle display of RTU, alarm, etc device info.
- ◇ QOS function on Ethernet, serial port or on video flow.
- ◇ Multiple data store ways: server save, local SD card save.
- ◇ Support PC client to view video.
- ◇ Wi-Fi client support.

### Advance feature

- ◇ Optimized video transmission quality on 2.5G and 3G network, real-time and reliable.
- ◇ Enhanced auto-alarm function, multiple ways of alarm.
- ◇ Optimized RS232 data transmission, full DTU function.
- ◇ Postage control design, timing dial-up and SMS dial-up control.
- ◇ Optimized for faster upload bandwidth.
- ◇ Enhanced router function, includes NAT, DMZ, static route table function.

### Parameters

Model	S3201		
Video encode standard	H.264		
Network	DHCP/Static IP/ADSL	EVDO/CDMA 1x	HSPA+/HSUPA/HSDPA/UMTS/EDGE/GPRS/GSM
Video Resolution	QCIF/CIF/2CIF/DCIF/4CIF		
Video input	1 way		
Video interface	BNC (level: 1.0 Vp - p, impedance: 75 Ω), support PAL		
Video frame rate	PAL: 1~25 frame/s		
Code type	Video flow/compound flow		
Output code-rate	Customized between 16K~2Mbps		
Audio input	1 way		
Audio interface	BNC (level: 2Vp - p, Impedance: 4.7 Ω)		
Audio code	G.726		
Audio code rate	16Kbps		
Voice input	1 way (level: 2Vp - p, Impedance 1k Ω)		
Communication port	RJ45 10M/100M Ethernet port x 1, RS232 x 1, RS485 x 1		
Router function	TCP/IP, PPPoE, DDNS, FTP, DNS, DMZ, NTP, DHCP, NAT, ICMP, ROUTE		
Alarm input	GPIO port x 2		
Alarm output	GPIO port x 2		
Storage capacity	1G~32G SD card		
Power supply	DC 12V		
Power consumption	≤4W		
Working temperature	-20°C~+65°C		
Working humidity	10%~90%(non-condensing)		
Dimension (mm)	32mm(height) x 105mm(width) x 156.5mm(depth)		
Weight	≤1Kg		

### Related product

**S3225**



Designed for vehicle, 4 way video and hard disk support.

**S3224**



Designed for fixed location or temporary monitoring. 4 way video and SD card support.

**S3201**



Tiny and low price, 1 way video and SD card support.

# S3225A-K



## Caractéristiques:

### Basis feature

- ◇ H.264 standard, high compression ratio and flexible.
- ◇ 4CH video& audio input.
- ◇ B/S, C/S platform structure support.
- ◇ GPS support, locate on electronic map.
- ◇ Wi-Fi b/g/n support, AP and Client mode support.
- ◇ PTZ support and electric lens control, multiple decode support. Support setting, preset positions, cruise, tracking.
- ◇ Support RS-232 port data transportation.
- ◇ Voice inter-communication support.
- ◇ Alarm input/output, motion detect, etc.
- ◇ Timing photo and sending.
- ◇ Full 3G router function, DMZ, NAT.
- ◇ Support subtitle display of RTU, alarm, etc device info.
- ◇ QOS function on Ethernet, serial port or on video flow.
- ◇ Multiple data store ways: save in server or local hard disk.
- ◇ Support PC client/WEB GUI to view video.

### Advance feature

- ◇ Timing power and shutdown the device to save energy.
- ◇ Optimized video transmission quality on 2.5G and 3G network, real-time and reliable.
- ◇ Enhanced auto-alarm function, multiple ways of alarm.
- ◇ Optimized RS232 data transmission, full DTU function.
- ◇ Postage control design, timing dial-up and SMS dial-up control.
- ◇ Optimized for faster upload bandwidth.
- ◇ Enhanced router function, includes NAT, DMZ, static route table function.
- ◇ 2.5' hard disk shockproof support.

### Parameters

Model	S3225A-K			
Video encode standard	H.264			
Network	LTE	HSPA+/HSPA/HSDPA /UMTS/WCDMA	CDMA 2000	Wi-Fi b/g/n, AP and Client
Resolution	Up to 4 channel D1			
Video input	4 channel (Air connector to BNC, level: 1.0 Vp - p, impedance: 75 Ω)			
Video output	2 channel (Air connector to BNC, level: 1.0 Vp - p, impedance: 75 Ω)			
Video frame rate	1~25 frames/seconds			
Code type	Video flow/compound flow			
Output code-rate	Adjustable between 16K~2Mbps			
Audio input	4 channel (Air connector to BNC, level: 2 Vp - p, impedance: 4.7k Ω)			
Audio output	2 channel (Air connector to BNC, level: 2 Vp - p, impedance: 4.7k Ω)			
Audio code	G.726			
Audio code rate	16Kbps			
Voice input	1 channel (level: 2Vp - p, impedance 1k Ω)			
Communication	RJ45 10M/100M Ethernet port x 1, RS232 x 2, RS485 x 2			
WIFI	802.11 b/g/n			
Alarm input	GPIO port x 8 (voltage level), differential signal x 1			
Alarm output	GPIO port x 4 (switching value)			
Storage capacity	2.5' hard disk x 1, 1~32G SD card x 1			
Power input	DC 8-36V			
Power supply	4 x DC 12V / 1 x DC 5V			
Power consumption	≤13W			
Working temperature	+5℃~+65℃			
Working humidity	10%~90% (non-condensing)			
Dimension (mm)	65mm (height) x 160mm (width) x 240mm (depth)			
Weight	3Kg			

### Related product

**S3225B**



Designed for fixed location or temporary monitoring. 4 way video and hard disk support.

**S3224**



Designed for fixed location or temporary monitoring. 4 way video and SD card support.

**S3201**



Tiny and low price, 1 way video and SD card support.

(Only For Your Reference)