

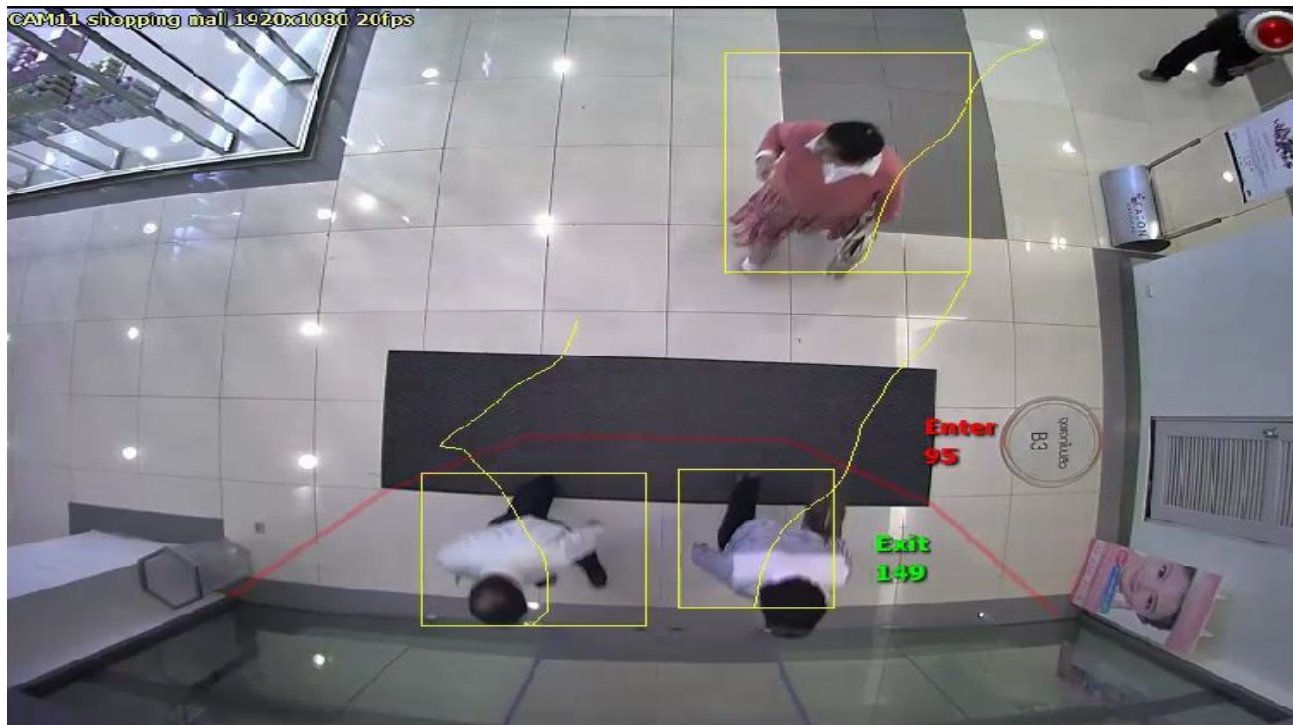
# **IVS Functions** *(Optional)*

Apr, 2014

**nuuo<sup>®</sup>**

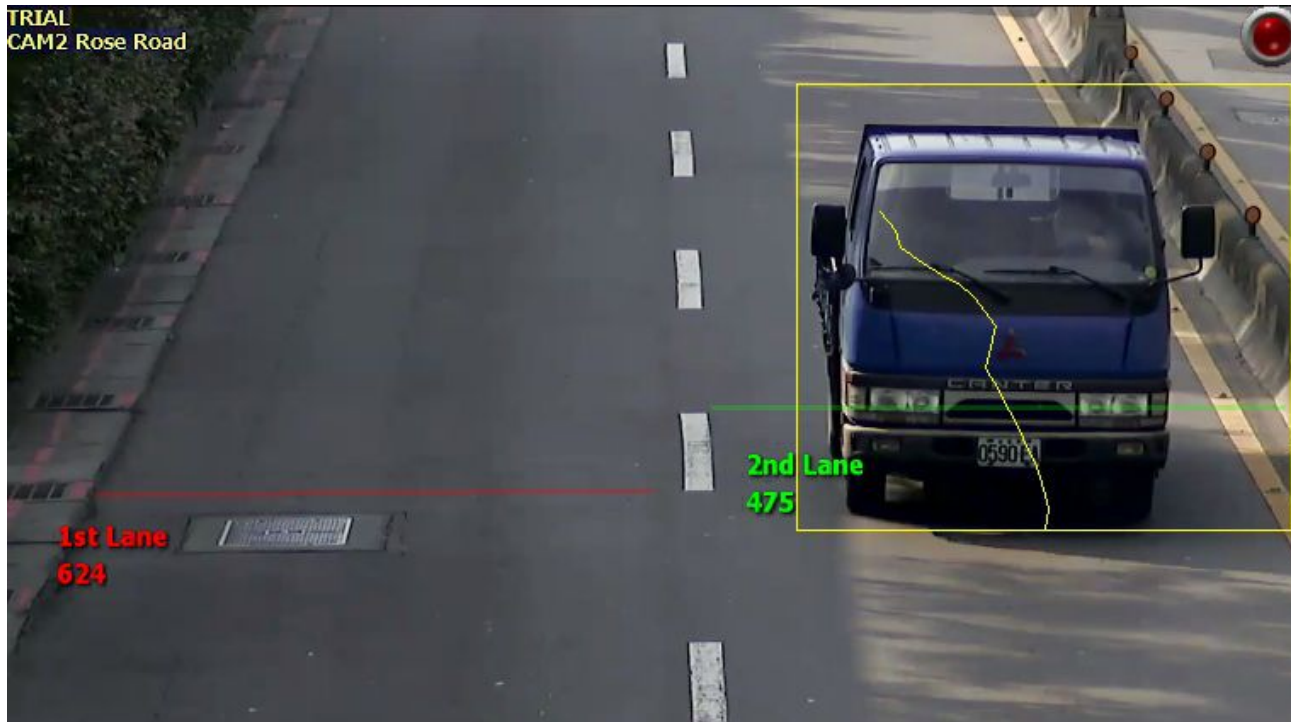
# SCB-IP-P-IVS **COUNTING**

- **People Counting** -- This counting solution includes a bi-directional line-crossing filter, suitable for counting people in busy doorways and entrances.



# SCB-IP-P-IVS **COUNTING**

- **Vehicle Counting** -- This vehicle counting solution includes a bi-directional line-crossing filter, suitable for parking lot, city surveillance and the other scenarios.



# SCB-IP-P-IVS **COUNTING**

- **Tamper Detect** -- Detects any event that significantly changes the field of view of the camera, such as loss focus, a camera being covered up...etc.

LOSS FOCUS

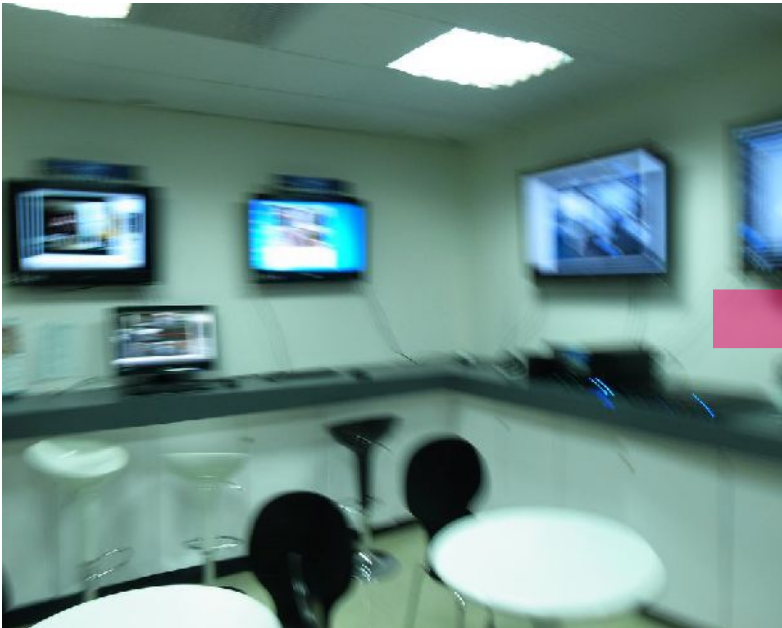


BEING COVERED



# SCB-IP-P-IVS **SURVEILLANCE**

- **Stabilizer** -- In environments where camera stability is an issue, this feature will compensate for any movement to provide a clear view.



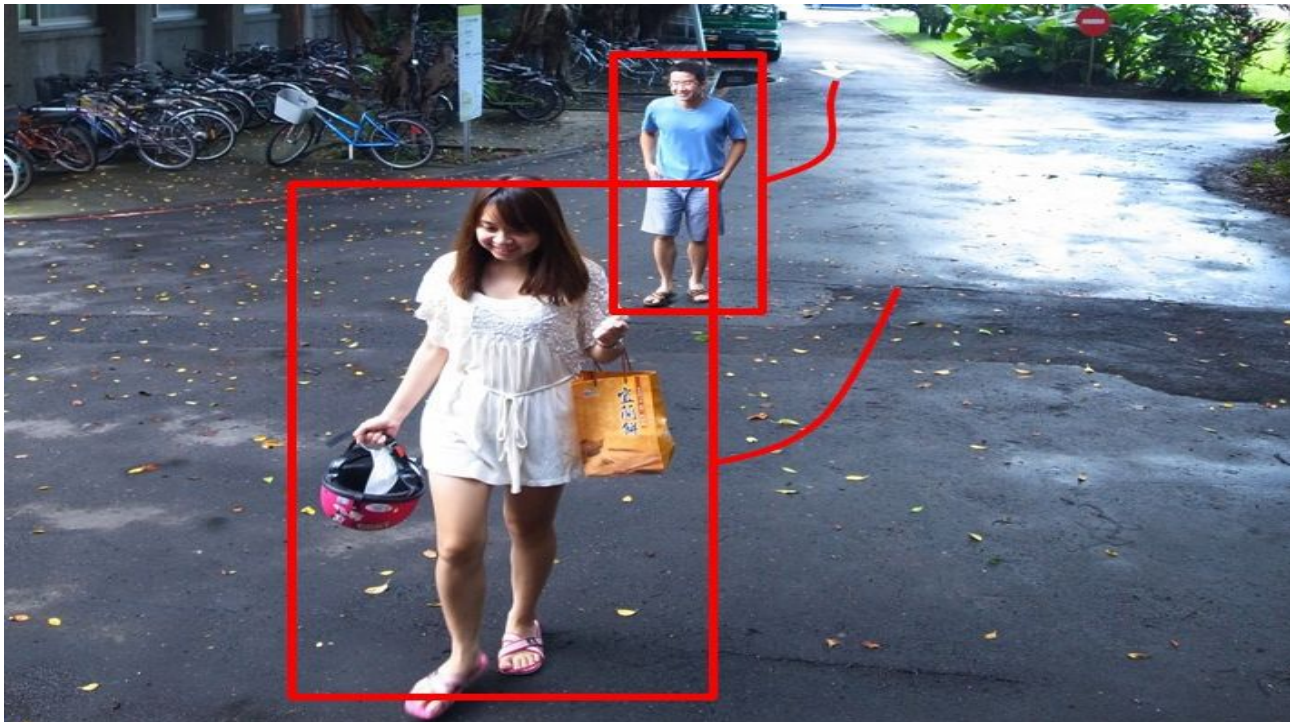
# SCB-IP-P-IVS **SURVEILLANCE**

- **Presence Filter** – (Tripwire; Intrusion; Perimeter Breach)  
Detects when an object or individual has penetrated the defined perimeter



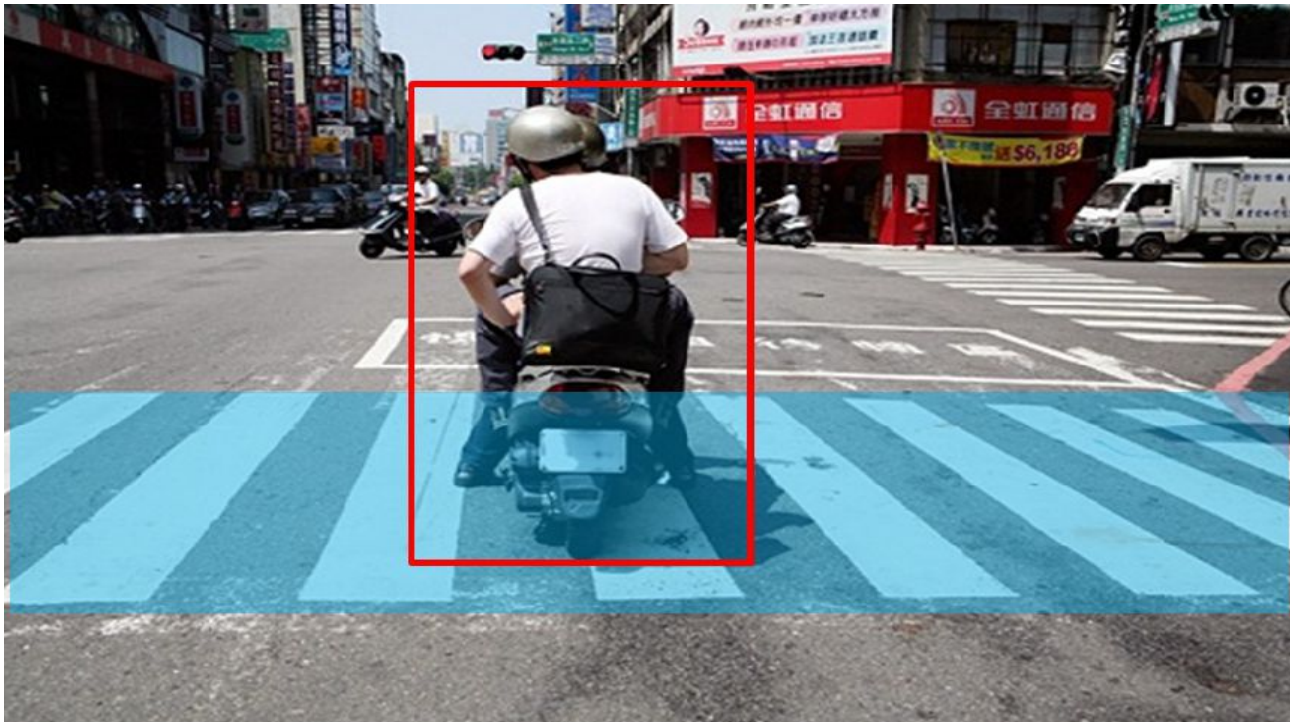
# SCB-IP-P-IVS **SURVEILLANCE**

- **Tailgating** -- Object tailgating is defined as two objects crossing a virtual line or zone within in a pre-defined time frame



# SCB-IP-P-IVS **SURVEILLANCE**

- **Stop** -- Objects that are stopped inside a zone for longer than the defined amount of time will trigger an alarm, such as illegal parking in fire lanes or object blocking emergency exits.





# SCB-IP-P-IVS **SURVEILLANCE**

- **Dwell** – (Loitering) Objects that dwell inside a zone for longer than the pre-defined amount of time will trigger an alarm such as loitering people and loitering vehicle



# SCB-IP-P-IVS **SURVEILLANCE**

- **Direction** -- Objects that travel in the configured direction (within the limits of the acceptance angle) through a zone or over a line trigger an alarm, such as detecting vehicle moving in the wrong direction



# SCB-IP-P-IVS **SURVEILLANCE**

- **Enter and exit** -- An alarm is raised when an object crosses from the outside to the inside of a detection zone. Conversely, an alarm is raised when an object crosses from the inside to the outside of a detection zone



# SCB-IP-P-IVS **SURVEILLANCE**

- **Appear and Disappear** -- Used to detect people appearing or disappearing through a doorway but ignores people passing by in front of the doorway.



© 2013 NUUO Inc. All rights reserved.  
THIS DOCUMENT IS PROVIDED FOR INFORMATIONAL PURPOSES ONLY AND IS NOT INTENDED AS ADVERTISING. ALL WARRANTIES  
RELATING TO THE INFORMATION IN THIS DOCUMENT, EITHER EXPRESS OR IMPLIED, ARE DISCLAIMED TO THE MAXIMUM EXTENT  
ALLOWED BY LAW. THE INFORMATION IN THIS DOCUMENT IS SUBJECT TO CHANGE WITHOUT NOTICE. ALL MENTIONED BRAND NAMES  
ARE REGISTERED TRADEMARKS AND PROPERTY OF THEIR OWNERS.

nuuo®